

# Gas Steak Grill

# Gas Steak Grill

Models  MVSS90



## Standard Features

- Twin surface combustion plaque burner
- 2 independent burner controls
- Flame failure device on all burners
- Vitreous enamelled interior for easy cleaning
- Reversible ribbed brander plate
- Removable grease trough
- Adjustable height toast rack and crumb tray

## Options & Accessories

- Stainless steel wall brackets
- Stainless steel tubular bench stand
- Stainless steel tubular floor stand
- Flexible gas hose
- Also available in Natural Gas or Propane

## Specifications

The Moorwood Vulcan Steak Grill is designed to cope with the demand from larger steak houses and similar restaurants.

The 900mm steak grill has two high efficiency independently controlled plaque burners with low turn-down position for full flexibility.

The adjustable height and slope on the brander, which is also reversible, and toasting rack provide total flexibility for all applications.

Can be mounted on wall brackets, floor or bench stand.

The product is ideal for a hard working kitchen and is designed to provide many years of value-for money service.



ENODIS UK FOOD SERVICE

5E Langley Business Park, Station Road, Langley, Berkshire SL3 8DS  
Fax: 01753 485901 Email: [info@enodis.com](mailto:info@enodis.com)

Group Tel: 0845 370 4888

[www.enodisuk.com](http://www.enodisuk.com)

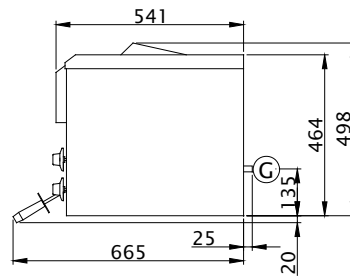
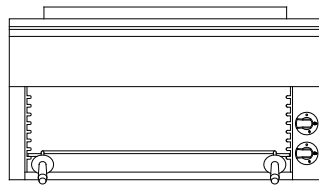
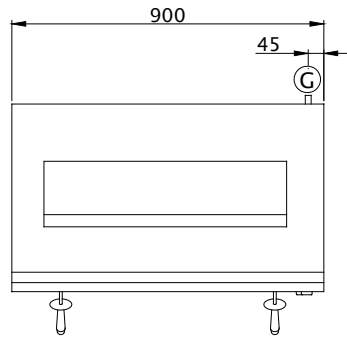
Datasheet Part No. 933158-01

Revision No. 1

August 2008



MVSS90



### DIMENSIONS

MODEL NO.	OVERALL SIZE			COOKING SURFACE		NET WEIGHT	SHIPPING WEIGHT (APPROX)
	HEIGHT	WIDTH	DEPTH	WIDTH	DEPTH		
MVSS90	498mm	900mm	541mm	596mm	525mm	67kg	76kg

### POWER REQUIREMENTS

Model NO.	Gas Consumption per hr. Natural Gas	Gas Consumption per hr. Propane Gas	Gas Connection	Total Output (kW) NG / LP
MVSS90	1.63m <sup>3</sup> /hr	1.19kg/hr	R 1/2"	17.7 / 16.5

If using a flexible snap on connection hose, a 3/4" diameter is required. Please consult the Technical Manual or CORGI regulations for further details. Please allow adequate clearance for Connection elbow & governor arrangement behind equipment

For further information on MV products and services or advice on which unit suits you best please contact the sales department.

Model Specification

#### ENODIS UK FOOD SERVICE

5E Langley Business Park, Station Road, Langley, Berkshire SL3 8DS  
 Fax: 01753 485901 Email: info@enodis.com

Group Tel: 0845 370 4888

www.enodisuk.com

Datasheet Part No. 933158-01

Revision No. 1

August 2008